

DP8000

SMART PRINT SYSTEM

Fully Automated Soldermask Coating Machine



Hands-Free Fully Automated Coating Machine

The DP8000 coating machine is a fully automatic double-sided screen print equipment that eliminates the need for an manual operator. The DP8000 comes with Smart Print System which delivers superb quality with minimum thickness of 1mil. In addition, the DP8000 can apply all types of liquid photo-imageable inks including solder mask, primary image, dielectric, and legend. Includes robotics for a hands-free experience and is equipped for various configurations depending on industry needs.



Taiyo Circuit Automation DP8000

Engineered to eliminate the need for a manual operate making this double-sided coating machine completely hands free and able to deliver more precise coating quality, repeatability, and coating consistency print after print.

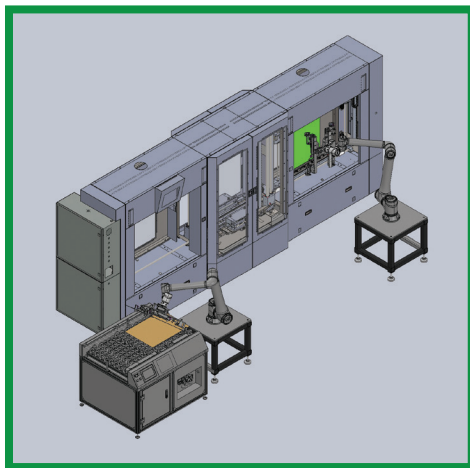
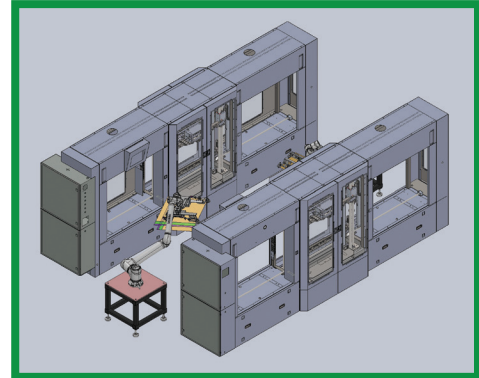
Flexible Configurations & Layouts

DP8000 Quattro (Dual Coaters) ▶

This high production automatic line of the DP8000 system comes with an auto-feed conveyor, two coaters, infeed and outfeed 6-axis robots with EOATS, and Robot stand.

Print spec: 140pph

System dimensions: 5334mm(L) x 3438mm(W) x 2222mm(H)



◀ DP8000 Single Coater

This automatic line of the DP8000 systems has a loader and unloader on each side of the coating section. This configuration comes with an auto-feed conveyor, single coater, infeed and outfeed 6-axis robots with EOATS, and Robot stand.

Print spec: 105pph

System dimensions: 5334mm(L) x 2141mm(W) x 2222mm(H)

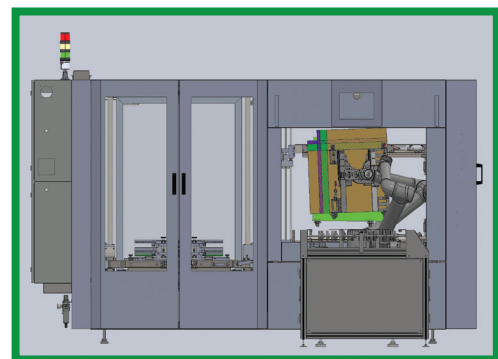
DP8000 ZM ▶

This is a standard conventional design of the DP8000 system. This system has one load/unload section and coating section.

The machine's orientation could be Left Hand of Right Hand depending on the user requirements. This configuration comes with an auto-feed conveyor, one coater, infeed and outfeed 6-axis robots with EOATS, and Robot stand.

Print spec: 105pph

System dimensions: 4339mm(L) x 3394mm(W) x 2222mm(H)

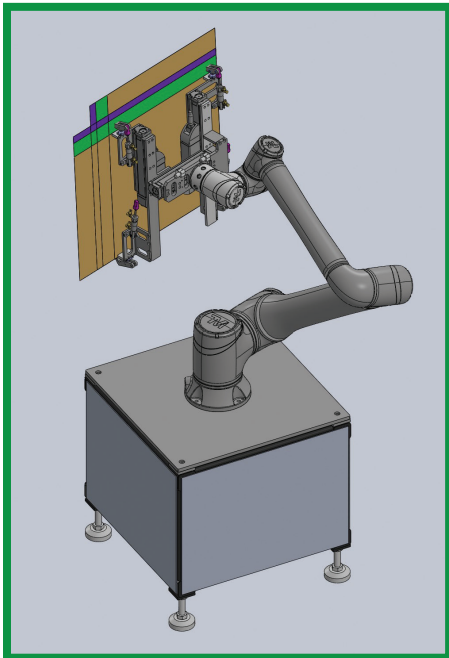
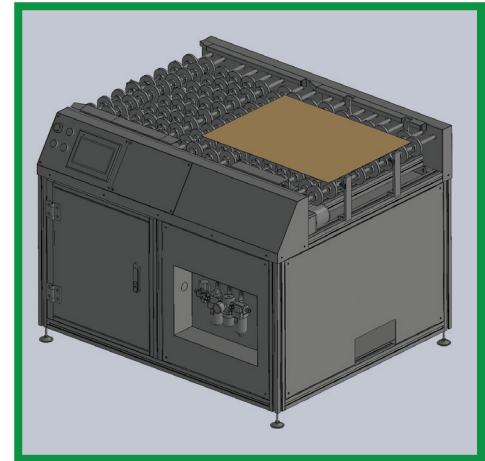


Additional Parts

Auto-feed conveyor ▶

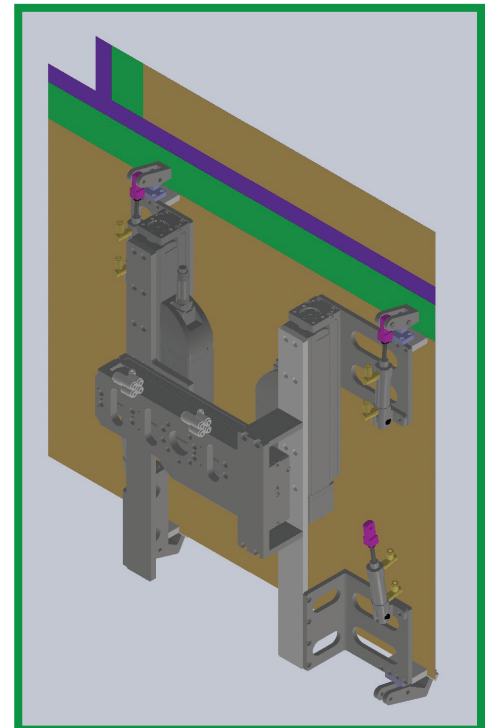
Spec: 458mmx610mm panel can be fed in portrait or landscape orientation. (Other sizes upon customer's request.)

Dimensions: 1156mm(L) x 960mm(W) x 872mm (H)



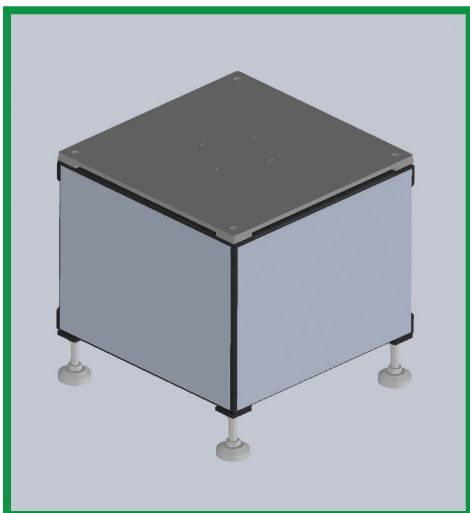
◀ 6-Axis Rob

Spec: Reach - 1300mm;
Max. Payload - 12Kg;
Speed - 1.3m/sec



▲ Robot End-Effector (EOAT)

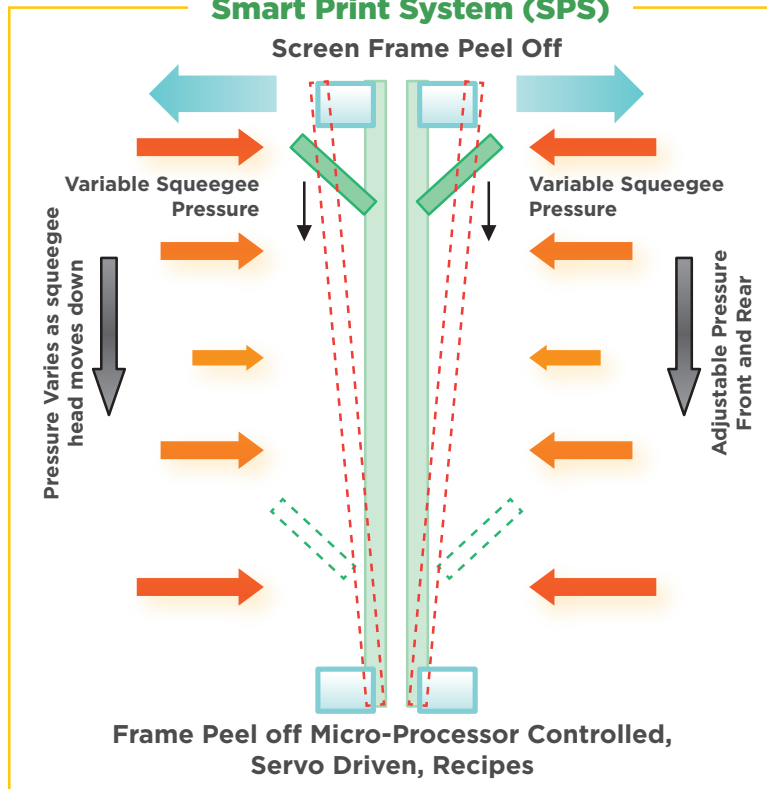
Spec: Max. Payload - 5Kg;
458mmx610mm panel can be fed in
portrait or landscape orientation. (Other
sizes upon customer's request.)



◀ Robot Stand

Dimension: 600mm x 600mm x 609mm

Smart Print System (SPS)



DP8000 Features

- SPS "Smart Print System"
- Modulated Squeegee Pressure recipes
- Microprocessor servo driven Screen Frame Peel Off
- Extensive use of stainless steel, cleanroom ready
- User friendly operator ergonomics, controls
- Advanced Safety System
- 60 Standard Recipe

DP8000 Advantages

- Simultaneous Dual-Sided Coating
- Elimination of Side-to-Side Variation
- Reduction in Handling Defects
- Controllable coating thickness
- Unique application technique

Specifications

DP8000

Minimum Panel Dimensions (W X H)	229 W X 305 L mm (9" x 12")
Maximum Panel Dimensions (W X H)	458 W X 610 L mm (18"x24")
Minimum Panel Thickness	0.05mm (0.002")
Maximum Panel Thickness (Options)	Standard Clamp 3.2mm (0.125") : Thicker Optional
Border Requirement (Top and Bottom)	6mm (0.236") minimum
Screen Frame Size (W X H X T)	933.5 X 1361 X 38mm (37" X 53.6" X 1.5")
Printing Speed	Stepless Adjustable 1-25 cm/sec
Flood Speed	Stepless Adjustable 1-25 cm/sec
Maximum Machine Cycles	105 pph**
HMI Languages Supported (currently)	English, Chinese, French, German, Spanish
Electrical Requirement	208-240 V, 1Ø, 50/60Hz, 15 Amp service
Pneumatic Requirement	8.5 m ³ /hr @ 6.9 bar (5 cfm @ 100 psi) (2.2 l/s @.69 MPa)
Machine Length (doors open/closed)	3394mm (133")/4115mm (162")
Maximum Machine Width (doors open)	4339mm (171")
Machine Height - Minimum / with status light	1936mm (76.2")/2222mm (87"5)
Exhaust: 2 : 152mm (6") & 127mm (5")	approx. 425 m ³ /hr (250cfm)
Coater Weight -machine	1136 Kg (2500 lbs.)
Coater Weight -crated	1363 Kg (3000 lbs.)
Crated Dimensions (L X W X H)	356 X 142 X 229cm (140" X 56" X 90")

**Represents mechanical capability based on 610 H panel in F/P/P mode. Actual production rate may vary