

HC 340 ConveyORIZED Hanging Ovens

Flex Panels with ASA Separators

Hanging Reduces Warpage

The HC family of ovens features hanging style and combination ovens. The Combination ovens, HC340/220 Combi for final bake and the HC340/110 Combi feature hybrid hanging and rack based transport systems. Panels are held by two spring clips, spaced 305mm (12") apart and suspended from an overhead conveyor. Suspending panels in this manner enables very thin panels to be processed without special fixtures. However, ultra-flexible panels need additional support on the bottom to prevent excessive movement in the oven. One of our newest models HC340-FL/125 adds detachable anti sway devices to ultra-thin panels to prevent them from touching. Two different clips spacing are available: either 19mm (.075") or 25.4mm (1") and the ovens are available in either a 4m or 8m configuration of heated zones.

Increased Yields

In any process, handling is one of the primary sources of defects. The HC340 family of ovens enables automation of the final curing process, eliminating operators inadvertently damaging panels while loading or unloading panels. The fully automatic versions of this oven enable panels to be automatically loaded and unloaded by horizontal conveyor. Hanging panels in a consistent air flow environment allow each panel to be processed identically so that consistent, repeatable results are obtained. A repeatable process will yield repeatable results and can make the difference between success or failure in critical applications.

High Productivity

HC340 series ovens are available in either the standard 4.0-meter single chamber versions or in the dual chamber 8.0-meter versions. The hanging clips may be spaced at either 25.4 mm (1") or 38mm (1.5"). The HMI smart controller allows for a variety of run configurations allowing for selectable clip spacing for specialized drying applications. The high air flow and precise temperature profile enable the work to be dried in less time as compared to less efficient ovens. Taiyo Circuit Automation's hanging design utilizing two very strong spring clips allows for easy of loading and tolerance to warpage.



Access Doors Now Standard on all models

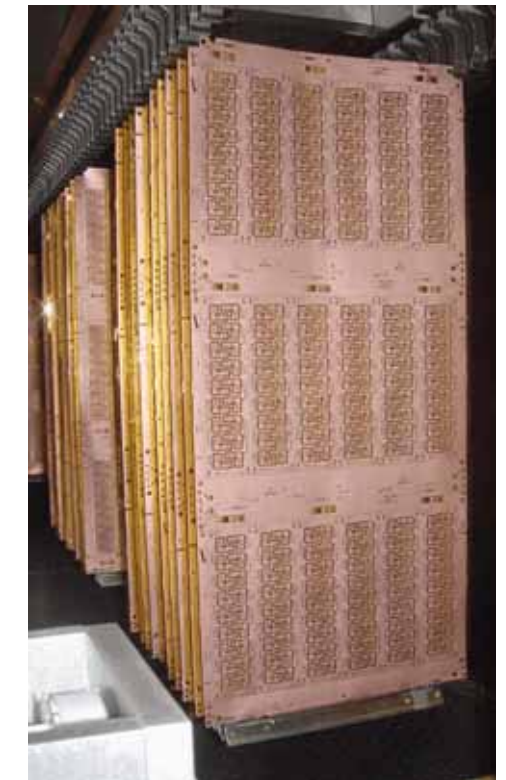
HC 340 Production Proven



HC340/400 8 meter two zone heated zone



3rd Generation Opener



HC SERIES

HANGING & COMBI OVENS

HC340 Series Ovens



MODEL

HC340

VERSION	110	150	310	V4.4	110Combi	220Combi	V4.5
Heated Zone	1	1	2	1	1	1	1
Heated Length	4m	4m	8m	4m	4m	4m	4m
Hanging Clip Space	38mm/1.5"	25.4mm/1"	25.4mm/1"	38mm/1.5"	38mm/1.5"	38mm/1.5"	25.4mm/1"
Capacity @60 min/hr.	105	157	157	105	105	105	157
Rack Drive System	no	no	no	no	yes	yes	no
Maximum Temp.	190 ° C / 275 ° F						
Maximum Panel Size	660mm X			762mm			
Minimum Size Hanging	305mm X			305mm			
Minimum Size Rack					Rack Dependent	Rack Dependent	
Heater Capacity kW	48	48	48	96	48	48	48
Electrical Service							
Voltages	380-400V	480V	3phase				
Amperes 60Hz	100A	100A	200A	100A	110A	110A	110A
Amperes 50Hz	125A	125A	220A	125A	135A	135A	135A
Pneumatic	17 m3 /hr. @6.5 bar						
Exhaust Ports	4	4	16	8	8	8	8
Exhaust Req.	1500 cfm	2548 m3/hr.	2X(others)	2548 m3/hr.	2548 m3/hr.	2548 m3/hr.	2548 m3/hr.

HUJmc '7 ircuit Automation, Inc.

&* +) '5 bh'Yf '8 f'ž7 Ufgcb '7]mžBJ', - +\$%

Ph: 775.885.9959, ext. 2

www.taiyocircuitautomation.com

© July 12, 2018 Rev R

This information is believed to be true and accurate based on our laboratory testing and filed experience. Since actual use is beyond our control, no warranties, expressed or implied, exist. Specifications and designs are subject to change without notice.