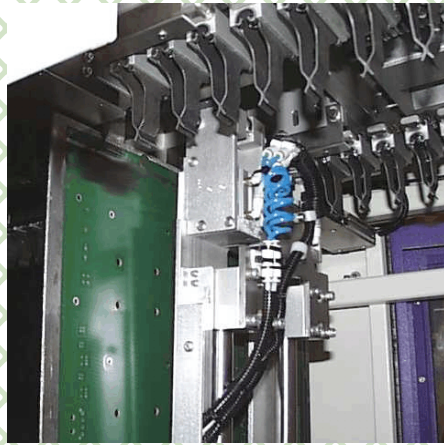
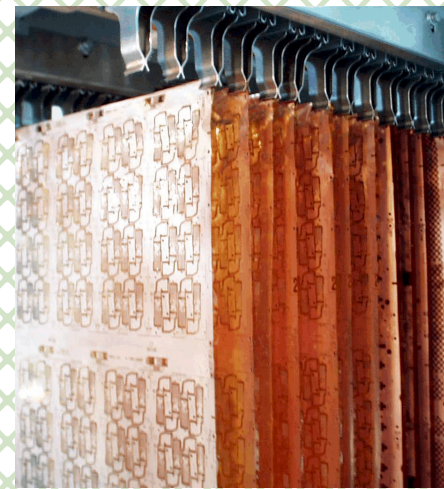


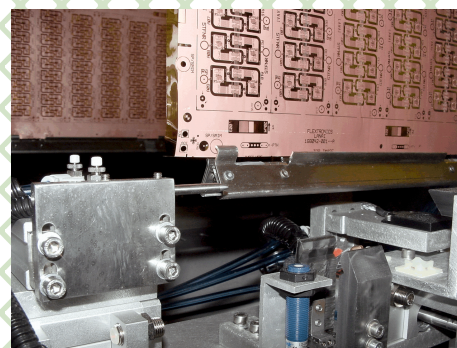
DP6000 - FL FULLY AUTOMATIC THIN PANEL AND FLEXIBLE SHEETS COATING AND DRYING



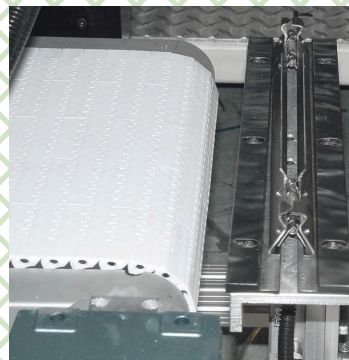
Vertical to Horizontal unloader



Highly productive hanging oven

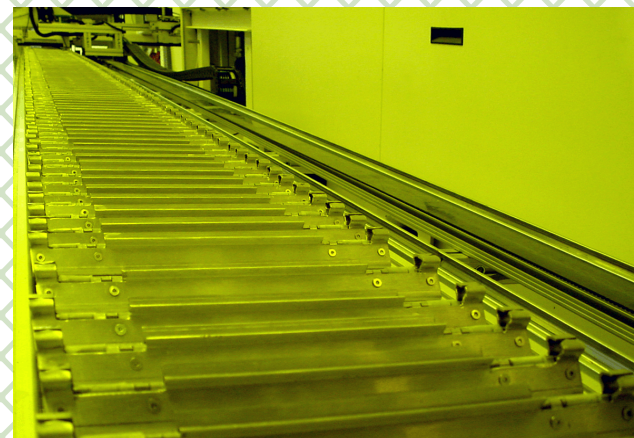


Automatic detach of ASA device

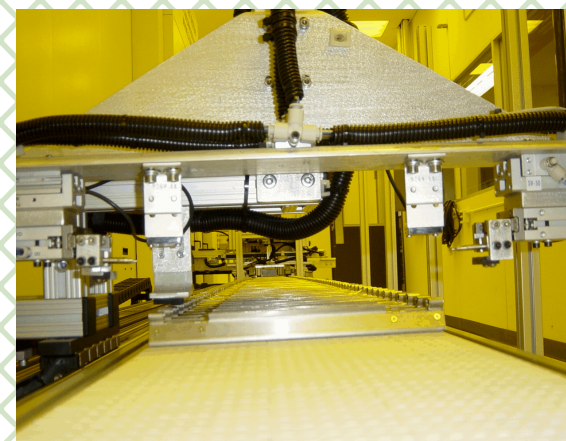


Detach Home Position

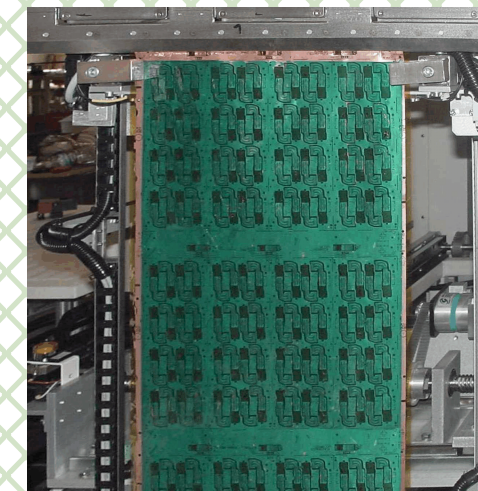
New Technology
Increases Process
Capabilities, Throughput, Yields



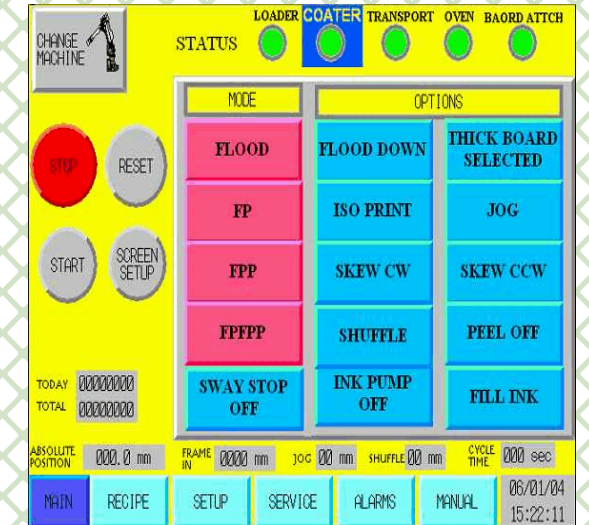
Return conveyor loaded with ASA devices



Transfer device aligns, positions ASA



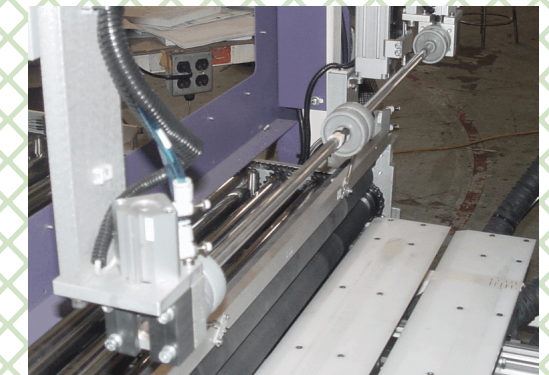
Multi-justifiable VTS transport



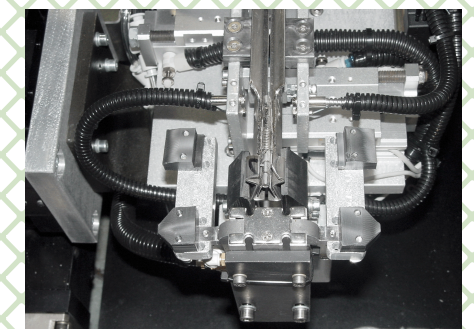
Interactive Omron PLC recipes, troubleshooting alarms, and interactive help menus.



Centering sensors and loading system for flex



Pinch roller for reliable sheet loading



Attachment Device with ASA

The DP6000 -FL. Designed to automatically coat and dry very thin panels and flexible sheets, incorporating a unique system to stabilize and isolate the coated product in the hanging-style HC340 oven, maximizing panel throughput. The ASA sheet thin panel and flexible sheet stabilizers are automatically attached and detached from the product.