

# TAIYO CIRCUIT AUTOMATION

## DP3500 *Smart Print System*

*Precision Coating Double Sided LPI Soldermask*



Specifications	DP3500 LH (Left hand) & RH (Right hand) Models
Minimum Panel Dimensions (W X H)	229 W X 305 L mm (9" x 12")
Maximum Panel Dimensions (W X H)	610 W X 762 L mm (24" X 30") * Clean Rm Opt 610X660mm max
Minimum Panel Thickness	0.05mm (0.002")
Maximum Panel Thickness (Options)	Standard Clamp 3.2mm (0.125") : Thicker Optional
Border Requirement (Top and Bottom)	6mm (0.236") minimum
Screen Frame Size (W X H X T)	933.5 X 1361 X 38mm (37" X 53.6" X 1.5")
Printing Speed	Stepless Adjustable 1-25 cm/sec
Flood Speed	Stepless Adjustable 1-25 cm/sec
Maximum Machine Cycles	125 pph**
HMI Languages Supported (currently)	English, Chinese, French, German, Spanish
Electrical Requirement	208-240 V, 1Ø, 50/60Hz, 15 Amp service
Pneumatic Requirement	8.5 m <sup>3</sup> /hr @ 6.9 bar (5 cfm @ 100 psi) (2.2 l/s @ .69 MPa)
Machine Length	3302mm (130")
Maximum Machine Width (Doors Open)	2319mm (91.3")
Machine Height - Minimum	1936mm (76.2")
Exhaust: 2 : 152mm (6") & 127mm (5")	approx. 425 m <sup>3</sup> /hr (250cfm)
Coater Weight -machine	1136 Kg (2500 lbs.)
Coater Weight -crated	1363 Kg (3000 lbs.)
Crated Dimensions (L X W X H)	356 X 142 X 229cm (140" X 56" X 90")
** Represents mechanical capability based on 610 H panel in F/P/P mode. Actual production rate may vary.	

**TAIYO CIRCUIT AUTOMATION**

2675 Antler Dr. Carson City, NV USA 89701

775.885.9959, x. 2

[www.taiyocircuitautomation.com](http://www.taiyocircuitautomation.com)



This information is believed to be true and accurate based on our laboratory testing and field experience. Since actual use is beyond our control, no warranties, expressed or implied, exist. Specifications and designs are subject to change without notice.

January 24, 2017 Rev. e

*Fully Capable Advanced Generation Equipment*



# Taiyo Circuit Automation DP3500

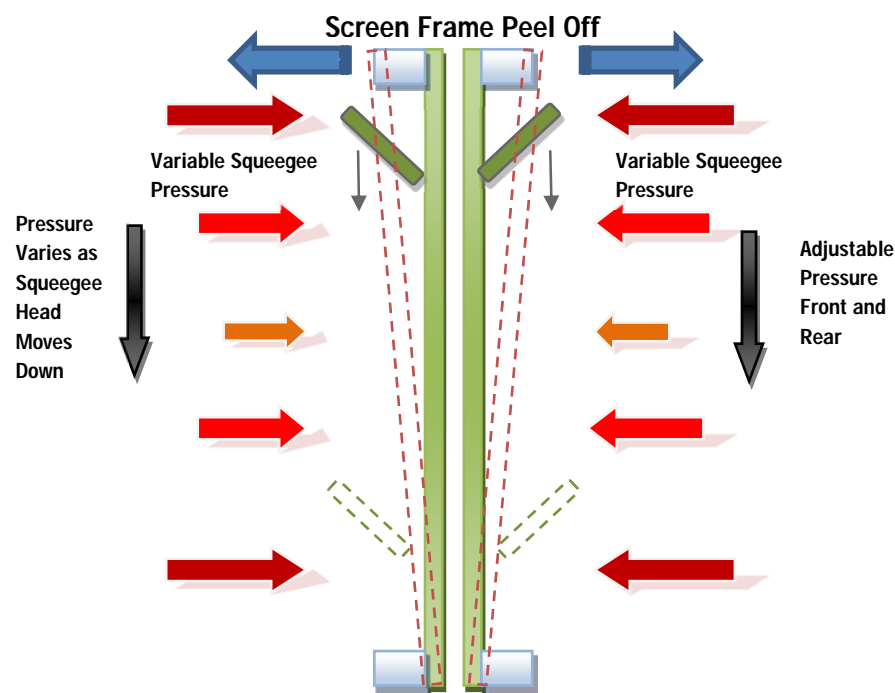
**Engineered to deliver more precise coating quality, repeatability and consistency print after print**

## Refined Precision Printing

**DP3500** continues to be refined and improved. LPI coaters featuring the **SPS** "Smart Print System". Precise control with recipe functions reduces coating variation across the panel from the top to bottom and front to rear. **DP3500** has enhanced process stratagems; precisely and reliably coating the finest micro-thin flexible substrates through the thickest backpanels. Newly released, "Smart Print System" permits modulation of the selected squeegee pressure during the printing cycles. Varying the squeegee force stabilizes the Dynamic Squeegee Pressure across the substrate during coating; improving coverage and reducing mask in holes.

Recipe controlled fourth servo axis synchronizes peel off frame opening sequence and Dynamic Squeegee Pressure applied to the substrate work surface. This system is unique in its ability to modulate and sustain uniform Dynamic Printing Pressure.

### SMART PRINT SYSTEM "SPS"



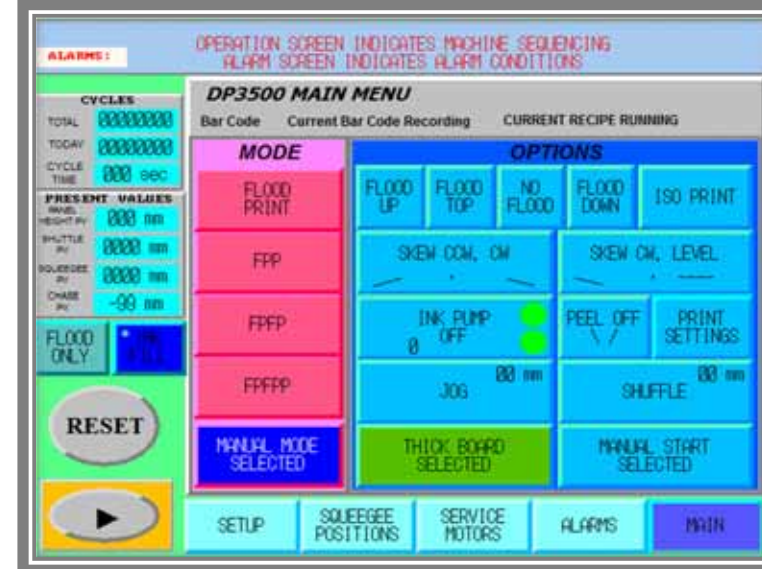
Frame Peel off Micro- Processor Controlled, Servo Driven, recipes

### DP3500 Features

- SPS "Smart Print System"
- Modulated Squeegee Pressure recipes
- Microprocessor servo driven Screen Frame Peel Off
- Extensive use of stainless steel, cleanroom ready
- User friendly operator ergonomics, controls
- Advanced Safety System
- 60 Standard Recipes

### DP3500 Advantages

- Simultaneous Dual-Sided Coating*
- Elimination of Side-to-Side Variation*
- Reduction in Handling Defects*
- Controllable coating thickness*
- Unique application technique*



English Main Menu

Multi-lingual Omron HMI (Human Machine Interface) touch screen simplifies process control. Each virtual panel displays only those controls suited to the task-at-hand, eliminating confusing clutter of status lights, switches, dials to reduce set up time and enhances productivity. The screen queue prompts the operator to make appropriate choices in the correct sequence. Newly expanded Recipe function stores and supports sixty different recipes. Advanced touch

screen enhances control, operator assistance, service and maintenance functions; increasing productivity and safety.

- **Optional** Anti-static enhancements.
- **Optional** Data Logging enhancements including logging of error messages. Accountability and verification are now required. The DP3500 logs every function of the coating process for every panel by job number.



Chinese Recipe Screen



Servo Peel Off